



Discover what we are doing for you...



KCP
Kentucky Cancer Program
Biennial Report
2018-2020

More than 35 years ago, the Kentucky General Assembly had a vision to create a community-targeted, cancer control program to address the state's disproportionately high cancer rates. Working in collaboration with the two major cancer centers at the University of Kentucky and the University of Louisville, the Kentucky Cancer Program (KCP) was established with a powerful mission: to reduce cancer incidence and mortality in the Commonwealth through education, research and service.

The MISSION of the Kentucky Cancer Program is to reduce cancer incidence and mortality in the Commonwealth through education, research and service.



The Kentucky Cancer Program is approaching 40 years of service to Kentuckians! As Directors of the Brown Cancer Center and the Markey Cancer Center, we are pleased to jointly administer this state mandated program, which remains vital to our comprehensive cancer mission. The 2018-2020 biennium reflects the end of a decade of great change for Kentucky... one in which we moved from 49th to 17th in the nation for colon cancer screening rates! This period also brought technological and therapeutic advances which can impact our lung cancer outcomes. KCP has helped lead the way, introducing health care providers and the public to interventions to increase screening, improve treatment, and increase tobacco cessation. We now end the decade as one of a few states to successfully implement lung cancer screening, paving the way for early detection and survivorship of a disease that has long claimed the lives of many Kentuckians.

Highlights of these and other accomplishments are presented in this biennial report. We are proud of the collaborations between our universities, researchers, cancer care providers, and KCP. Together, we will continue to accelerate efforts to increase screening for early detection; to introduce innovative cancer prevention programs; to deliver state of the art treatment; and to expand research for discoveries in cancer care. While COVID-19 has brought new challenges and changes to operations, it too, will be defeated through collaboration, research and scientific advances.

We want to thank the Kentucky General Assembly for the continued support. We also salute our partners for working with us in innovative ways to provide life-saving services to Kentuckians. Most importantly, to our growing population of cancer survivors who inspire us every day, we also pledge our support.



A handwritten signature in black ink that reads "Jason Chesney".

Jason A. Chesney, MD, PhD
Director, Brown Cancer Center



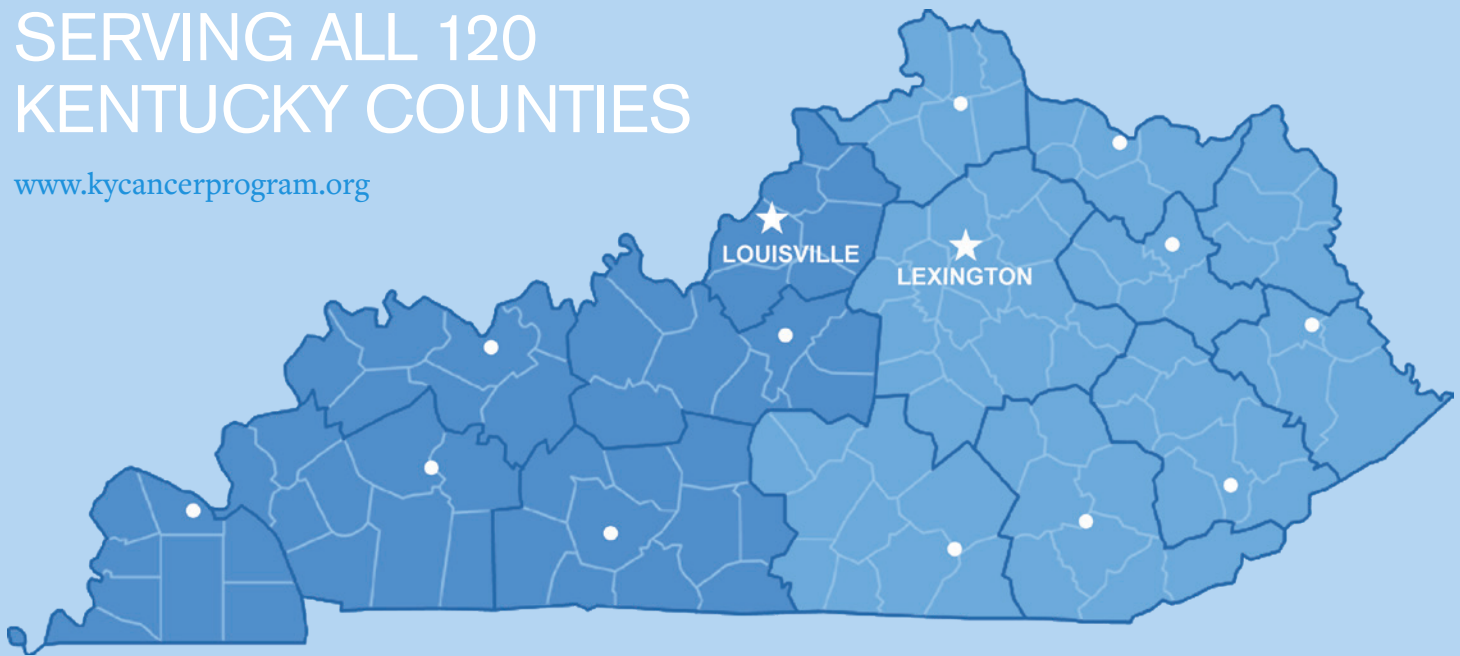
A handwritten signature in black ink that reads "B. Mark Evers".

B. Mark Evers, MD
Director, Markey Cancer Center

Nationally unique, the Kentucky Cancer Program (KCP) is the state mandated cancer control program established in 1982 by a visionary Kentucky General Assembly to address the high cancer rates in the Commonwealth. Under the direction of the state's academic cancer centers at the University of Kentucky (UK) and the University of Louisville (UofL), KCP translates the latest research findings into cancer prevention and early detection programs for the public; patient and family support services; continuing education and training programs for healthcare providers; and special initiatives to address cancer health disparities.

SERVING ALL 120 KENTUCKY COUNTIES

www.kycancerprogram.org



Kentucky has the highest cancer mortality rate in the nation.



Regional Cancer Control Specialists (RCCS) in a network of 14 regional offices mobilize communities through coalitions and partnerships to serve all 15 Area Development Districts. Created using a health equity lens, programs are based on the latest science, driven by data including statistics from the Kentucky Cancer Registry, and guided by District Cancer Councils. Fostering community engagement, systems changes, and equitable access have always been paramount. KCP led the development of the

Cancer Action Plan for Kentucky and continues to support implementation with the Kentucky Cancer Consortium. Representatives also serve on governor appointed groups to guide state programs: the Kentucky Breast Cancer Advisory Committee, the Kentucky Colon Cancer Advisory Committee and the Kentucky Breast Cancer Research and Education Trust Fund Board.

Highlights of the many special initiatives led by KCP are presented in this report. Detailed information on local programs is available through regional staff.

Plan to be Tobacco FREE.SM

KCP
Kentucky Cancer Program



As a continued response to the state's rate of tobacco use, KCP maintained an innovative approach, Plan to be Tobacco FreeSM (PTBTF), to help the thousands of Kentuckians who are still struggling with nicotine addiction and seeking assistance to become tobacco free. Trained navigators conducted in-person and virtual educational group classes or one-on-one coaching sessions at healthcare facilities, educational institutions, businesses and other community locations across Kentucky during the biennium.

These sessions help individuals to: learn about tobacco use and nicotine addiction; assess readiness to quit; learn about medications to help quit using tobacco; identify resources available from community, state and national resources; assess personal habits; develop a personalized quit plan; and learn about lung cancer screening. KCP provided 120 PTBTF sessions statewide that reached 630 participants.

Healthcare System Partnerships

During the biennium, KCP sustained partnerships with several healthcare systems across Kentucky, including Owensboro Health, Methodist Hospital and Baptist Health Louisville. Navigator trainings were conducted with Allen County Health Department, Baptist Health La Grange, Family Health Center, HealthWorks Medical, Kentucky Homeplace, Oldham County Health Department, Pikeville Medical Center, and University of Louisville Physicians during the biennium, training an additional 84 healthcare professionals. These health systems provide both one-on-one sessions at their healthcare facilities for patients and group programs for the public.

In addition, KCP maintained a focus on the facilitation and maintenance of health system changes for tobacco cessation counseling and treatment. Monitoring St. Elizabeth Healthcare progress in Northern Kentucky, KCP helped ensure an electronic connection with National Jewish Health (the Quit Now Kentucky contract service provider) that allows providers to refer any patient using tobacco to the Quit Line through electronic medical records. Successful implementation of a pilot project was also facilitated with Baptist Health Paducah with plans to execute system-wide in the next biennium.

KCP is also exploring collaborations with other health systems across the Commonwealth to assist the many citizens still suffering from nicotine addiction.

Tobacco Cessation

KCP continued collaborations with the Kentucky Tobacco Prevention and Cessation Program to promote tobacco cessation resources to all Kentuckians. Central to this effort is Quit Now Kentucky, My Life, My Quit, This is Quitting, as well as the American Lung Association's Freedom From Smoking.



Helping Pregnant Women Overcome Nicotine Addiction



Kentucky leads national averages for pregnant women who smoke, motivating the Centers for Disease Control and Prevention to provide special funding to the Kentucky Tobacco Prevention and Cessation Program. The Pregnancy and Postpartum Protocol, designed to improve smoking cessation effectiveness for pregnant and postpartum women, was established for Kentucky's 1-800-QUIT NOW.

This FREE program incorporates evidence-based practices including at least five calls during pregnancy and at least four calls postpartum with a dedicated female coach specifically trained to work with pregnant smokers. The

Kentucky Tobacco Prevention and Cessation Program continued its partnership with KCP for assistance in increasing calls to the quit line from women who smoke during and after pregnancy. Relationships were maintained with select healthcare provider offices and community organizations that serve the target population to promote the Pregnancy Postpartum Program. KCP provides information about 1-800-QUIT NOW including the patient referral process and incentives for patient participation.

New to this biennium was the addition of SCRIPT® – Smoking Cessation and Reduction in Pregnancy Treatment Program – an award-winning, evidence-based program shown to be effective in helping thousands of pregnant women quit smoking. KCP staff became certified trainers and conducted trainings for healthcare professionals in the western part of the state. A total of 22 healthcare professionals representing 10 organizations were trained. These healthcare professionals will utilize one-on-one coaching sessions with pregnant women to help them quit.

KCP Tackles Vaping in Kentucky



With vaping and associated health risks on the rise in Kentucky, KCP at UK launched a new initiative in 2019. A resource kit and educational training, with access to technical assistance was created utilizing evidence-based materials and resources. The program was designed for educators, health care providers

and the general public to increase knowledge about vaping products and the risks associated with use. Through partnerships with 13 community partners and co-sponsors, 455 participants have completed the program through ten classes and one facilitator training. Additional activities are undergoing revision due to COVID-19.

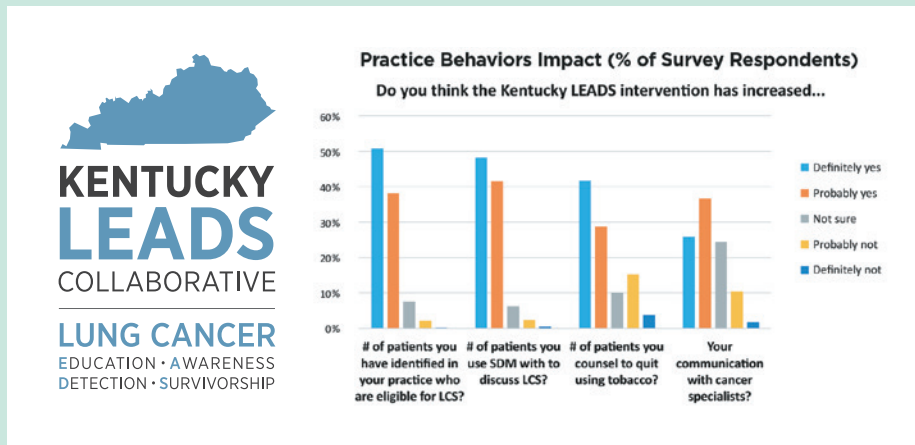
Providers Practice Prevention

KCP's Providers Practice Prevention courses remain popular with multidisciplinary health professionals. Trainings on Treating Tobacco Use and Dependence were conducted for 140 dental and dental hygiene students and faculty at UofL. KCP staff also served as observers during UofL Dental School's Standardized Patient Clinics, providing feedback to 126 dental students. An educational presentation on Lung Cancer in Kentucky was launched during the 2016-2018 biennium. With a special emphasis on the 1-800-QUIT-NOW and other tobacco cessation resources, the program continued during this biennium, reaching 42 physicians. KCP staff also participated in Grand Rounds at the University of Louisville School of Medicine sharing this same tobacco prevention and cessation information with 91 healthcare providers in multiple disciplines.



Educating Primary Care Providers on Lung Cancer Care in Kentucky and Nationally

Lung cancer is the leading cause of cancer death in the United States, with more than 228,000 Americans diagnosed annually, and more than 143,000 lung cancer deaths each year. Primary care provider involvement is critical for reducing the burden of the disease across the country. While lung cancer rates vary widely among states, Kentucky has led the nation in both incidence and mortality, but has made tremendous strides and is currently fourth in the nation for lung cancer screening (LCS).



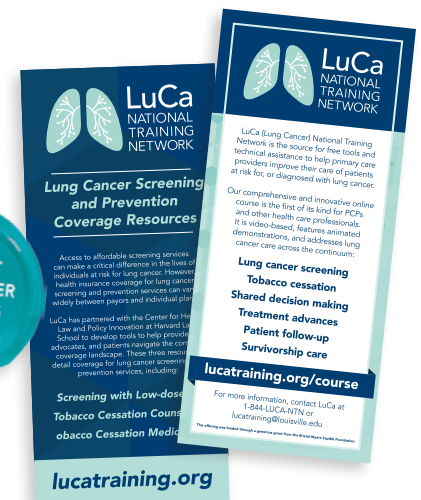
Kentucky LEADS Collaborative

Cancer prevention and control partners at UK and UofL including the Markey Cancer Center, Brown Cancer Center, and KCP have been implementing a multi-year grant funded by the Bristol-Myers Squibb Foundation to improve lung cancer care in Kentucky. Three projects have been implemented as part of Kentucky LEADS including an educational program focused on primary care providers; a survivorship program for patients and caregivers; and a demonstration project to increase quality lung cancer screening in Kentucky.

LuCa National Training Network

Building on the success of the Kentucky LEADS Collaborative, KCP at UofL launched the LuCa National Training Network in 2018 to expand provider education efforts nationwide. Through a generous grant from the Bristol-Myers Squibb Foundation, LuCa provides free lung cancer care training and materials for primary care providers across the United States, including:

- A comprehensive and innovative online course, “Lung Cancer and the Primary Care Provider,” offering up to 2.5 CME/CE credits
- A webinar series addressing current lung cancer care topics
- An expansive resource library, including over 300 articles and practice tools for providers and their patients
- Technical assistance for those who educate providers and other healthcare professionals on lung cancer care



LuCa is a member of the National Lung Cancer Roundtable and works with health systems, state cancer coalitions, provider organizations, and other groups across the U.S. to engage providers around lung cancer topics, with a particular emphasis on screening and tobacco cessation. LuCa has presented to various audiences at national and international conferences and meetings, including:

- IASLC World Conference on Lung Cancer – September 2018 and 2019
- Lung Cancer Alliance (now GO2 Foundation) Screening and Care Conference – November 2018
- Bristol-Myers Squibb Foundation Grantee Summit – April 2018 and 2019
- Lung Cancer Screening and Prevention: An Insurance Research Resource Workshop – July 2019
- National Lung Cancer Roundtable Annual Meeting – December 2018 and 2019
- American Association for Cancer Research and IASLC Joint Meeting – January 2020



Implementing the Cancer Action Plan for Kentucky

KCP has partnered with the Kentucky Cancer Consortium (KCC) for more than 17 years to implement the Cancer Action Plan for Kentucky in communities across all Kentucky Area Development Districts. Highlights during the biennium are presented below:



Community Clinical Linkages for Colon Cancer



KCP organized community clinical linkages across the state to address colon cancer. Working with hospitals and other organizations, the Incredible Colon was displayed in 50 locations. The goal was to provide education and information on colon cancer as a preventable disease and to facilitate access for early detection and treatment. Colon cancer screening rates continue to increase with most districts seeing 70% or more of the eligible population being screened. Notably, the Purchase District in Western Kentucky achieved the National Colon Cancer Roundtable's goal of 80% of the eligible population screened in 2018. Colon cancer incidence and mortality rates continue to decline, as a tribute to successful partnerships across the state.

Through KCC funding, KCP collaborated with the American Cancer Society (ACS), Kentucky Cancer Link, and the Markey Cancer Center on an innovative Talking Card that provides individuals with instruction to complete a Fecal Immunochemical Test (FIT). Preliminary results are encouraging with 161 of 181 (87%) eligible participants completing the FIT tests. Of the 161 who completed the tests, 63 were positive for blood in the stool. Participants were from 39 counties across the state, and plans are being made to produce additional Talking Cards to reach more people in need of cancer screening.



Get the FIT Facts

KCP developed a **Get the FIT Facts** campaign funded by KCC and working in collaboration with ACS, the Kentucky Department for Public Health and the Colon Cancer Prevention Project. KCP's RCCS conducted key informant interviews with 85 primary care practices across the state, representing 434 providers (228 physicians, 107 physician assistants, and 99 nurse practitioners). Over 1500 patient education materials on colon cancer screening including posters, reminder cards and other practice resources were distributed. Post key informant interviews were conducted with 41 practices, and an additional 463 educational materials were provided. Efforts are underway to update the kit to include all colon screening options including stool DNA testing, as many of the providers recommend it over the FIT.

Radon Education and Testing

KCP, KCC, UK BREATHE (Bridging Resource Efforts and Advocacy Toward Healthy Environments) and the Kentucky Department for Public Health joined forces on a new project to educate Kentuckians on radon as the second leading cause of lung cancer deaths. Educational programs, exhibits, and fact sheets were provided to worksites to encourage individuals in these high-risk areas to test their homes for this invisible, odorless gas. Thirty-six presentations were conducted in rural communities with over 550 participants. The majority of participants reported increased knowledge of cancer risks as well as an intent to implement the home test.



KCP Engages Rural Worksites in Lung Cancer Prevention

KCP continued to work with the UK College of Public Health to implement Lung Cancer Prevention, Early Detection and Survivorship Support in Worksites. The pilot projects were completed in eight southern Kentucky counties in 2018 (Casey, Christian, Clay, Jackson, McCracken, Ohio, Perry and Warren). The Worksite Resource Kit was developed, piloted, and updated with feedback from roundtable discussions. Additional funding in 2019 from the SelfMade Health Network and the Centers for Disease Control and Prevention (CDC) allowed expansion of the intervention to promote resources and policy changes that support tobacco treatment and reduce exposure to secondhand smoke. RCCS worked to identify individuals to be trained as Tobacco Treatment Specialists to assist individuals in rural communities with cessation and treatment of tobacco addiction. Staff continue exploring opportunities for expanding the project into additional worksites in rural communities.



Popular Skin Cancer Programs Reach Thousands

KCP delivered skin cancer prevention and screening programs to more than 8,000 Kentuckians during the biennium. Educational programs featuring bracelets, beads, and sunglasses that change color when exposed to UV light are very effective tools to deliver messages to all ages. The very popular Dermascan which allows people to view sun damage to their faces attracts hundreds at health fairs and community events. KCP is also called upon to present skin cancer awareness programs and skin cancer screenings at many locations. The Kentucky State Fair provides a great venue to offer skin cancer screenings to people from across the state, many of whom work outdoors and are at risk for sun damage. Thanks to partnerships with Anthem Blue Cross and Blue Shield, the Kentucky Dermatological Association, Kentucky Farm Bureau, local hospitals, and many others, KCP screened over 3,250 Kentuckians during the biennium.



New SunSense Initiatives During COVID-19

A new program was initiated in response to requests from community partners for resources to educate youth about skin cancer prevention. People were encouraged to stay “healthy at home” due to the COVID-19 pandemic, providing an opportunity to reinforce the importance of sun safety, especially in summer months. Community partners worked with KCP to develop creative ways of reaching and educating youth while respecting social distancing restrictions. Kits for making bracelets with beads that demonstrate the impact of UV exposure were distributed to youth in conjunction with family education programs about skin cancer risks and prevention through 4-H in Bracken County and a summer meal program in Johnson County. KCP is in the process of creating a web-based educational video and will utilize low-literacy fact sheets and brochures on skin cancer prevention.

Supporting Cancer Research for Kentucky

A new pilot research study, E-DETECT, funded by the National Institute of Health is underway in Kentucky. Led by Kathy Baumgardner, PhD, Richard Baumgardner, PhD, and Stephanie Boone, PhD, at the Brown Cancer Center, University of Louisville, the project aims to conduct a pilot study to improve the understanding of the causes of cancer and methods of non-invasive early detection for men and women. KCP has helped recruit participants and coordinate logistics for surveys, interviews, and blood draws at sites in Jefferson, Hart, Christian, Powell, Perry and Fayette Counties.



Kentucky HPV Roundtables



In partnership with National and Kentucky Area Health Education Centers, and regional medical centers, KCP worked closely with the American Cancer Society (ACS) to conduct a series of regional roundtables as part of a special initiative from the U.S. Centers for Disease Control and Prevention (CDC). Health providers, researchers, administrators and other stakeholders met in multiple communities across the state to share updates on the status of HPV vaccination rates; share best practices; generate ideas for action; and mobilize communities to close the HPV immunization disparity gap to decrease incidences of HPV-related cancers. Special guests and speakers included Dr. Shannon Stokley, Associate Director of Science for the Immunization Services Division within the CDC, University of Louisville researchers Dr. Ben Johnson and Dr. Shin-je Ghim, and Markey Cancer Center Director Dr. Mark Evers, and Emily C. Messerli DNP, APRN, FNP-C primary care provider University of Kentucky Health Services. Events were conducted in Louisville, Bowling Green, Paducah, Somerset, and Lexington.

Colon Cancer Initiatives

KCP Helps Implement Systems Changes to Increase Colon Cancer Screening

A five-year, cooperative agreement from the CDC, Organized Approaches to Colon Cancer Screening, was awarded to the Kentucky Department for Public Health in 2015. The purpose is to implement evidence-based interventions in partnership with health systems to institute screening programs to increase colon cancer screening in urban and rural counties (five in Appalachia). KCP serves on the leadership team and is contracted to work with seven Federally Qualified Health Centers (FQHC).

KCP Accomplishments:

- Developed tailored, culturally relevant posters and screening reminder cards

- Utilized local media to distribute messages to target populations
- Collaborated with the American Cancer Society (ACS) to train clinics on Flu-FIT interventions pairing colon screening interventions with influenza vaccines
- Promoted colorectal cancer screening to targeted groups served by the clinics through outreach

The program has demonstrated success through increased screening rates and as a result, the Kentucky Department for Public Health has been awarded funding for another 5-year cycle to continue this work.

Targeted Colon Cancer Outreach Program (TCCOP)

KCP coordinates an evidence-based “Targeted Colon Cancer Outreach Program” (TCCOP) in each of Kentucky’s 15 Area Development Districts. The program encourages the implementation of a broad range of strategies, coordination of efforts, and the creation of partnerships to increase colon cancer screening and outreach in local communities. These activities were supported by KCP in collaboration with hundreds of partners including the KCC, ACS, Kentucky Colon Cancer Prevention Project,

hospitals, clinics, pharmacies, universities and colleges, local health departments, Kentucky Cooperative Extension Service offices, Area Health Education Centers, businesses, chambers of commerce, government agencies, public schools, churches, libraries, and individuals.



Targeted Colon Cancer Outreach Program
Kentucky Cancer Program District Cancer Councils



Dress In Blue, Colon Cancer Education and Outreach

KCP stepped up to partner with the Colon Cancer Alliance in 2009 to lead the annual Dress In Blue Day campaigns for Kentucky. These March Colon Cancer Awareness Month initiatives remain popular across the state. Regional Cancer Control Specialists (RCCS) spearhead colon cancer awareness, education, and screening in communities all year long through health fairs, Incredible Colon events and educational programs.

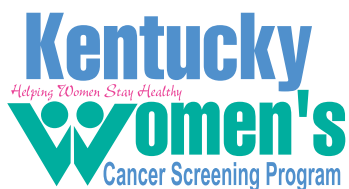


Biennial Highlights:

- 17,142 Participants reached at health fairs, Incredible Colon events and other activities
- 87,871 Educational and messaging materials distributed
- 110,000+ Kentuckians reached through print, radio and television
- 2,514 Surveys completed by participants
- 7,192 Participants toured Faces of Colon Cancer Exhibits, held by UK KCP
- 596 Big blue colon bags with colon information were distributed to hospitals, worksites and organizations by UK KCP, during March Colon Cancer Awareness Month



Breast and Cervical Cancer Initiatives



KCP has partnered with the Kentucky Department for Public Health (KDPH) for decades to link local communities to federal and state funded cancer services. That vital role continued during the 2018-2020 biennium with the Kentucky Women's Cancer Screening Program (KWCS), which is one of the state's most important resources for breast and cervical cancer screening among the uninsured.



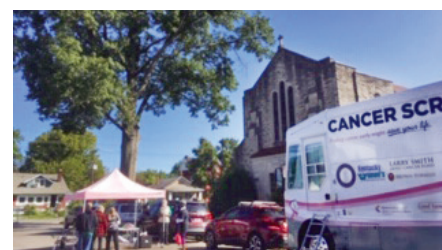
Public Health
Prevent. Promote. Protect.

KCP at UofL continued to develop and provide training and continuing education programs for local health department staff and private healthcare providers, along with KWCS contracted providers across the Commonwealth:



- As a part of the Comprehensive Reproductive Exam Training at the Regional Training Academy in Richmond, KCP conducted six clinical breast examination classes for 24 registered nurses.
- Seven web-based continuing education training modules are offered on ky.train.org. During the biennium, 382 healthcare professionals completed modules.
- RCCS visited over 250 healthcare providers and/or practices serving uninsured or underinsured women and the Medicaid population throughout the state.
- KCP coordinated exhibits at six professional conferences and conducted one-on-one visits with more than 1,000 healthcare professionals.

KCP also provided clinical breast exams and screening mammograms to KWCS eligible women in collaboration with the Horses and Hope Cancer Screening Van operated by the James Graham Brown Cancer Center. A special mammography outreach initiative was launched in 2020 to employ innovative strategies for community engagement to recruit and screen uninsured and underinsured African American women in West Louisville utilizing the mobile service.



Kentucky Breast Cancer Research and Education Trust Fund



Proceeds from the sale of breast cancer license plates and contributions from tax refunds support the Kentucky Breast Cancer Research and Education Trust Fund

administered by the Kentucky Department for Public Health.

KCP at UofL and UK each received grants during both years of the biennium for Pink Ribbon Mammography Awareness Days in select districts targeting at-risk populations. Based on the FDA Office of Women's Health Pink Ribbon Sunday Mammography Awareness Program, the program educates women about early detection of breast cancer through mammography. Programs in the Falls, Green River, Lincoln Trail and Purchase Districts were initially church focused and then expanded to include other organizations serving women from diverse ethnic, religious, and social backgrounds. A total of 853 African American and Hispanic women were reached through programs held at 30 locations with 82 women receiving mammogram referrals. Programs in the Northern Kentucky and Buffalo Trace designed

to increase screening among Medicaid recipients who were non-compliant reached 703 women, with 89 receiving mammograms of screening referrals. The initiative was expanded in the second year to Appalachian areas in Kentucky River, FIVCO, Big Sandy, Lake Cumberland, and Cumberland Valley. These programs for women who are low income, medically underserved, uninsured, Medicaid recipients, and non-compliant successfully reached 53 participants with 23 being screened or referred. Due to COVID-19, KCP at UK requested a grant extension to design alternative strategies and venues compliant with social distancing to educate, promote, and link at-risk women to screening resources. The program is continuing into the next biennium.



Horses and Hope®



Horses and Hope established in 2008 in collaboration with former First Lady Jane Beshear and her Pink Stable has been one of KCP's most successful programs. The initiative was started to increase breast cancer awareness, education, screening, and treatment referrals among Kentucky's signature horse industry. Public interest in Horses and

Hope led to outreach services for other at-risk populations and events honoring breast cancer survivors, and ultimately to a fundraising campaign for a new mobile cancer screening van. In honor of the

10th anniversary, Paul Miller Ford donated the pink Ford Mustang which was the pace car for the 2011 NASCAR World Spring Cup, which now travels the state for exhibitions. Programs continue today with support from Churchill Downs, Keeneland, the North American Championship Rodeo, along with many donations and in-kind support from friends of Horses and Hope. Thank you!



Race Days

Annual Race Days attracting over 3,000 breast cancer survivors and guests continued during the biennium at Keeneland, Churchill Downs, and Turfway Park. The tracks promoted breast cancer screening through the distribution of educational information, breast cancer awareness exhibits, a race dedicated to breast cancer survivors, and public service announcements. Horses and Hope was honored when friends of Shantel Lanieri, who had breast cancer and was the wife of jockey Cory Lanieri, asked international jockeys during



Breeders Cup to sign Horses and Hope jockey silks customized in Shantel's memory, which were presented during the Churchill Downs event. Heather French Henry was the featured guest at Turfway for their race day, and legendary bluegrass musician Sam Bush entertained guests at Churchill Downs. The 2020 events at Keeneland and Turfway Park were cancelled due to COVID-19.

Horses and Hope Pink Mustang

The Horses and Hope Pink Mustang is always a popular attraction for selfies! Special appearances were made in Beaver Dam for a concert with breast cancer survivor Sheryl Crowe to commemorate the new 3D mammography unit for Ohio County Healthcare and in the inaugural parade for Kentucky Governor Andy Beshear.



Cancer Screening Van

The Horses and Hope Cancer Screening Van operated by the James Graham Brown Cancer Center is on the road to deliver life-saving services. It is equipped to provide education and screening to men and women for multiple cancers. Services are offered to both insured and uninsured individuals including the medically underserved horse industry workers at thoroughbred race tracks in collaboration with the Kentucky Racing Health and Welfare Fund and the Kentucky Women's Cancer Screening Program. The van is supported by KCP, the Kentucky African Americans Against Cancer, and bilingual outreach workers. The Kentucky State Fair is the highlight of the year where people from across the state receive hundreds of cancer screening services during the 11 days.

Since the van was launched in March 2016, it has delivered almost 13,000 mammograms. During this biennium, the van provided 5,170 mammograms, 2,976 skin cancer screenings, 425 prostate cancer screenings and 87 head and neck cancer screenings; 156 people were counseled about colon cancer and those who qualified were referred for a screening kit; and 96 tobacco cessation assessments were conducted with lung cancer referrals as indicated.

Cancer Health Disparities Among African Americans



Kentucky African Americans Against Cancer (KAAAC), sponsored by KCP at UofL, is a group of concerned citizens, healthcare providers and cancer survivors seeking to reduce cancer health disparities in the African American population through education, outreach, patient support and advocacy. The coalition was established in 1990 as part of the National Cancer Institute's National Black Leadership Initiative on Cancer and continues today with programs throughout Metro Louisville.

Cancer Survivors Celebrate Black History Month in Authentic African Headwraps



In celebration of Black History Month, KAAAC's Living Beyond Cancer support group participated in an African headwrap contest. Dr. LaCreis Kidd from UofL and Angela Brown Jackson presented an

educational session on the cultural heritage of the headwraps—a crown covering the head that shows a sign of strength and courage—along with a demonstration. Following the head wrap competition, the cancer survivors participated in the Women of Courage Fashion Show held at the Kentucky Center for African American Heritage. Photos were taken by the renowned photographer Bud Dorsey, who has been the official photographer for the West Louisville community for over 30 years. The Women of Courage photos were placed on exhibit at the center for Black History Month.



iHeartRadio, national sponsor of Sista Strut, invited KAAAC to be a part of the annual walk for West Louisville. Held at Shawnee Park in October, this

fun event is designed to raise breast cancer awareness among African Americans. Proceeds from this annual walk help support KAAAC's community outreach programs.



Louisville and Jefferson County Partnership in Cancer Control

The Louisville and Jefferson County Partnership in Cancer Control was established by KCP with the support of the Kentucky Women's Cancer Screening Program in 1994 to address cancer health disparities in Metro Louisville. Focusing on breast, cervical, and colon cancer along with tobacco cessation, this coalition of community partners monitors cancer data; identifies gaps and barriers; coordinates cancer screenings; navigates residents to services; and develops integrated systems to deliver cancer prevention and detection services.

Faith and Action

KAAAC kicked off an exciting new initiative, Faith and Action, for African Americans in Metro Louisville in 2018. Representatives from over 150 churches attended a dinner sponsored by the Harriett B. Porter Cancer Education and Research Endowment announcing the campaign. KAAAC is now partnering with the Falls City Medical Society to deliver prevention, screening, and support services that will address cancer health disparities among the state's largest population of African Americans. Since the launch of the initiative, 29 representatives from 19 African American churches have been trained as Faith & Action ambassadors. The ambassadors have utilized the training manual and educational materials to implement programs in their respective churches.



African Americans Living Beyond Cancer

About 40 women and men gather each month for KAAAC's African Americans Living Beyond Cancer, a culturally rooted mind, body, and spirit support group experience. The support group's interactive sessions are designed to help cancer patients cope with diagnosis and treatment and lead them into recovery as survivors and advocates to support others.

KAAAC 30th Anniversary Celebration

KAAAC celebrated 30 years of service to the community on September 19, 2019 at the Crowne Plaza hotel with 200 attendees. The event was co-sponsored by 50 Hoops and the National Multiple Myeloma Research Foundation to highlight the rise in Multiple Myeloma among African Americans. Dr. Robert Emmons from the James Graham Brown Cancer Center was the keynote speaker. Kentucky Senator Gerald Neal, Dr. Jason Chesney, and the Porter family brought greetings to recognize and celebrate KAAAC for standing strong for the past 30 years.



Cancer Health Disparities in Appalachia

A National Outreach Network Community Health Educator (NON CHE), worked with KCP and Markey Cancer Center to increase the National Cancer Institute's impact in underserved Appalachian and rural communities; improve cancer health disparities with education and training; and enhance community engagement in cancer research. In addition to supporting KCP projects like "Get the FIT Facts," and "Lung Cancer Prevention and Survivorship is Good Business: Unifying Communities and Industries for Better Health," the NON CHE also contributed to special initiatives:

Big Sandy Community Cancer Network

In response to community needs, a collaboration was formed with KCP's Big Sandy RCCS, ACS and other regional stakeholders to establish a Community Cancer Network in the Big Sandy region. Stakeholders representing primary care clinics, dentists, school-based clinics, and educators have partnered to identify and implement evidence-based interventions and share best practices to increase HPV vaccine uptake rates and reduce HPV-related cancers in eastern Kentucky.

Appalachian Career Training in Oncology Program (ACTION)

With an eye to the future, an ongoing mentoring collaboration with undergraduate students participating in Markey Cancer Center's ACTION program has launched. ACTION is geared to develop Appalachian student interest in oncology research and medicine. The program offers Appalachian Kentucky high school and undergraduate students enrolled at the University of Kentucky the opportunity to gain cancer research, clinical, outreach and education experiences. This program is directed by Dr. Nathan Vanderford, University of Kentucky.

Listening Events



Community feedback is crucial to addressing needs and maintaining engagement at local levels. A special event was organized to provide citizens the opportunity to speak with cancer researchers from the UK Markey Cancer Center. "Community Conversations" hosted by Somerset Community

College in June 2019 gave people direct access to researchers Drs. Robin Vanderpool and John D'Orazio. The topics covered HPV related cancers, HPV immunizations, and melanoma. Participants actively engaged the researchers to identify community needs in areas of HPV-related cancers and skin cancer/melanoma. Outcomes of the event included knowledge increase for the 28 participants, and their assistance in the development of culturally appropriate messaging to improve cancer prevention knowledge. Event participant surveys also reported an overwhelming appreciation of the format and a desire for additional events.

Colorectal Cancer Screening Campaign

A media campaign was developed and implemented to increase public awareness to CRC screening during March, Colorectal Cancer Awareness Month, and in May 2019. With bonus ads from most of the stations, a total of 1,132 messages aired from 11 radio stations reaching at least 33 counties in Kentucky with lower rates of CRC screening than the state average.

Colorectal Cancer: Screen to Save (S2S)

In collaboration with KCP RCCS from Bluegrass-East, Kentucky River, and Cumberland Valley, the NON CHE implemented a successful colorectal cancer screening education series, Screen to Save (S2S) in 2017-2018. Positive outcomes showed significant knowledge increase regarding screening age recommendations; behavioral risk factors, and hereditary risk factors. Additionally, the RCCS and NON CHE were invited to provide an oral presentation and participate in a panel discussion highlighting the S2S project and its outcomes at the 2018 Appalachian Translational Network Summit, a National Institutes of Health-Supported Clinical and Translational Science Award Network.

Improving Uptake of Cervical Cancer Prevention Services in Appalachia

Lake Cumberland, Kentucky River, Cumberland Valley, Bluegrass East and West, and Big Sandy RCCS provided a community resource assessment and focus group recruitment and facilitation to help launch the five-year initiative, "Improving Uptake of Cervical Cancer Prevention Services in Appalachia." The goal of this multi-state/multi-level cancer prevention project is to address the burden of cervical cancer incidence and mortality in Appalachia through the delivery of a clinic-based prevention program that focuses on the major causes of cervical cancer: tobacco smoking, HPV infection, and lack of cervical cancer screening. The multi-level interventions (clinic, provider and patient) will be offered to eligible female patients and age-eligible children and young adults in four Appalachian states (Ohio, Kentucky, West Virginia and Virginia). In Kentucky, multiple focus groups have taken place, collecting valuable community insight to inform each level of the project as it moves toward implementation. This five-year National Cancer Institute Po1 research project is lead by Ohio State University's Dr. Electra Paskett, and overseen in Kentucky by University of Kentucky's Dr. Mark Dignan and investigators Dr. Jessica Burris, Dr. Adebola Adegboyega, and Dr. Lovoria Williams.

Accelerating Colorectal Cancer Screening and Follow-up Through Implementation Science in Appalachia

A collaboration took place with Buffalo Trace RCCS, UK, Markey Cancer Center researchers, local health providers and County Extension to provide technical assistance and community partner and outreach facilitation to implement "Accelerating Colorectal Cancer Screening and Follow-up through Implementation Science in Appalachia" (ACCSIS), a Cancer Moonshot award, in Vanceburg. Forty-five participants received face-to-face colorectal cancer screening information via small group education and an Incredible Colon tour in the first of six project sites. Additional ACCSIS site implementation has begun in Morgan and Lawrence Counties.



Life After Cancer for Patients and Families

New Normal: Life Beyond Cancer

KCP conducted workshops sponsored by Horses and Hope to support breast cancer patients transitioning from treatment to survivorship. One-day interactive, educational programs were held in Florence, Prestonsburg, and Nancy for cancer survivors living in rural Appalachian counties. They focused on topics which included reducing psychological and social distress related to diagnosis and treatment, managing physical symptoms and side effects, and developing a healthy lifestyle. Participants developed individual goals using a healthy living plan based on standard self-management methods with support from the RCCS. The 2020 events planned in Pikeville, Ashland, and Buffalo Trace were cancelled due to COVID-19 and will be rescheduled.



Surviving the “C” Bomb – Moving Beyond Cancer



KCP held an inaugural cancer survivor symposium in June 2019 which attracted over 100 cancer survivors and caregivers. The free event was held at the state of the art, Kosair Charities Clinical and Translational Research building. Attendees had the opportunity to hear special presentations including Healing the Mind and Body, Insurance/Advance Directives, Fear of Recurrence, Coping with Sexual Changes, and Self-Care for the Caregiver; participate in interactive music therapy, yoga, and art therapy sessions; and visit exhibitors during a resource fair. Symposium partners were the James Graham Brown Cancer Center, Norton Cancer Institute, Baptist Health Louisville, Gilda’s Club Kentuckiana, Friend for Life, Ovarian Awareness of Kentucky and the American Cancer Society. Other resources for participants were offered by

Derby City Dragons, Reach for Recovery, Livestrong and Hosparus. The 2020 event had to be cancelled and will be replaced by virtual Watch Parties on Facebook throughout the summer.

KCP Salutes Breast Cancer Ambassadors

KCP held a Party in Pink in October 2019 which attracted a capacity crowd of 500 breast cancer survivors all dressed in pink. The event was held at the Kentucky Center for the Arts’ new Paristown Hall in Louisville, which was lit pink for the occasion. Madeline Abramson, Director Emeritus of the Center, welcomed guests and co-presented awards to the: American Cancer Society, Baptist Health Louisville, Casting for Recovery, Derby City Dragons, Fillies Blanket of Hope, Friend for Life, Gilda’s Club Kentuckiana, Hope Scarves, James Graham Brown Cancer Center, Susan G Komen Louisville, Livestrong, Norton Healthcare, and Twisted Pink. American Idol finalist, Layla Spring and her little sister from Marion County delighted the audience with their performance on the beautiful new stage. Thank you to partners Buckhead Mountain Grill, The Café, Anthem Blue Cross and Blue Shield, and Louisville Stoneware for supporting the event!



Breast Cancer Symposium



In October 2018, “The 16th Annual Lake Cumberland Breast Cancer Symposium” in Somerset was held for 450 survivors and guests to provide education, recognition, support, and networking opportunities. The event featured a remembrance ceremony, over 45 exhibitor booths, and speakers that included survivors and representatives from Markey Cancer Center and the UK Division of Medical Oncology. The event was hosted by Alton Blakley Family of Dealerships, Lake Cumberland Regional Hospital, ACS and KCP. One survivor said this is the highlight of Breast Cancer Awareness Month and always offers learning opportunities along with great fellowship.

Life After Cancer for Patients and Families

Breast Cancer Celebration



The annual breast cancer celebration co-sponsored by the Bullitt County Health Department in Shepherdsville continued during the biennium. Guests were surprised with a special appearance by Kentucky Governor Paul Patton and former First Lady Judi Patton, who talked about her legacy efforts to start the Celebration of Hope honoring breast cancer survivors. She signed commemorative posters during the evening.

Biden Cancer Summit



In September 2018, KCP collaborated with Gilda's Club Kentuckiana to host the national Biden Cancer Summit for health

systems, non-profit cancer organizations, and cancer survivors. Remote presentations from Washington DC featured navigating the cancer journey, finding peer support from survivors, and other topics. Joe and Jill Biden invited participants to join their

initiative to accelerate progress in cancer prevention, diagnosis, treatment and care. The 50 guests were asked to consider challenges facing patients, caregivers and family members; prioritize needs for services; and identify gaps in the community. Local cancer care providers and organizations were given the opportunity to respond. The event concluded with lunch and exhibits sharing patient and family resources.

Cancer Survivorship Focus of District Cancer Councils

With the projected growth of cancer survivors to 26.1 million over the next 20 years, cancer survivorship became the statewide focus of District Cancer Councils (DCC's) during FY 2018-2019. KCP at UK featured Dr. Robin Vanderpool, Markey Cancer Center Associate Director of Community Engagement, and Mindy Rogers, Community Health Educator for Appalachian Cancer Control, who shared information from the Markey Cancer Center Assessing Health Status of Kentucky survey. The events were attended by 97 members representing 72 organizations and 41 counties. Participants expressed intent to share and utilize the information in support of cancer survivorship in their communities.

Utilizing resources from George Washington Cancer Institute, Centers for Disease Control and Prevention (CDC) and the American Cancer Society, KCP at UofL explored cancer survivorship care and coordination. Meetings were held with 159 participants, representing 73 organizations and 49 counties. Following these discussions, 39 council members signed up to plan survivorship activities, many of which are highlighted in this report.

CDC Funded Partnership for Survivors

KCP at UK received funding under a five-year CDC supplemental grant to work with the Kentucky Cancer Consortium and the Kentucky Cancer Registry to increase utilization of cancer care plans and survivor support services. Central to the effort was the development of a survivor registry and a survivor tool kit. Plans were guided by key informant interviews and surveys. The initiative also features webinars with the Markey Cancer Center Affiliate Network and self-management workshops in the Big Sandy and FIVCO Districts.



COVID-19 forced the cancellation of many annual cancer survivor events. KCP and the Brown Cancer Center quickly converted their 2020 gathering to a drive-thru celebration at Cardinal Stadium featuring Nashville country music artist JD Shelburne, who performed a special tribute to the patients, survivors, and families.



Cancer Survivor Retreat-Barren River State Park

Cancer survivors enjoyed a retreat at Barren River State Park compliments of KCP, Med Center Health, TJ Regional Health, and WKU Nursing. Interactive sessions on wellness, healthy eating, physical exercise, cancer resources, yoga, rock painting, fishing/casting, and caregiver support made it a fun, interactive experience for survivors, family, and friends. Chefs were on site to share cooking tips and a healthy lunch.

Pathfinder – A Guide to Cancer Resources in Kentucky

The web-based Pathfinder has attracted almost 90,000 pageviews since launching in 2015! This easy-to-use online tool, with links to a variety of cancer resources was first developed by KCP over 25 years ago. The guide provides local, regional, state and national resources for patients, families, providers, navigators and the public. The Pathfinder connects to a broad range of services for cancer prevention, screening, treatment and support. A visit to the website www.kycancerprogram.org provides resources in the following areas:



Cancer Screening Tests/Tobacco Use

Find cancer screening locations and tobacco use cessation resources.



Medical Care

Connect with cancer resource centers, home health agencies, hospice, oncologists, along with pain management, physical therapy and public health centers.

Information, Referral and Navigation

Locate hospitals, cancer centers, cancer resource centers, and other general cancer resources.



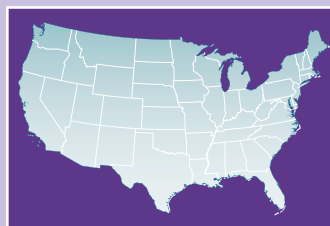
Survivorship and Support Groups

Find camps and retreats, support groups, grief services and patient and family services.



Patient Assistance

Find complementary therapy, counseling, employment and rehabilitation, financial assistance and legal services, medical supplies and equipment, prosthesis and wig supplies, temporary housing and transportation.



National and State Resources

Access national and statewide organizations that provide information and services related to cancer. Many of these also have state offices located in Kentucky.

Gilda's Club - West Louisville



KCP and Gilda's Club Kentuckiana have forged an exciting partnership to serve residents of West Louisville. A new office has been constructed in the Republic Bank Foundation YMCA to provide educational programs, support services, and special events for the community. This location will allow Gilda's Club to expand their programs for cancer patients and families to this underserved area in collaboration with KCP's coalition, the Kentucky African Americans Against Cancer. Working in West Louisville to address cancer health disparities among the African American population has been a KCP priority for almost 30 years. KCP welcomes the opportunity and the additional resources to offer new services in this community.

Highlights from Kentucky's Area Development Districts

BARREN RIVER

The Ravenous Race attracting over 120 participants was held in September 2018 in Bowling Green to honor the memory of Dean Valentini, who lost his life to internal melanoma, a rare form of cancer. His wife, Deana, and friend, Morgan Baer chose the race name because Dean was a dedicated runner and a Baltimore Ravens fan. KCP's Elizabeth Westbrook spoke at the event, which raised \$5,000 for the Brown Cancer Center, where he was treated.



In recognition of October, National Breast Cancer Awareness Month, First Baptist Church in Russellville turned their fellowship hall pink for a luncheon for over 30 women. Attendees enjoyed a Pearls of Wisdom presentation by KCP; strung pearl necklaces as a keepsake; awarded door prizes; and received goody bags. Pink cupcakes provided a sweet conclusion to the event!

BIG SANDY

In November 2019, KCP partnered with Highlands Appalachian Regional Health (ARH), Passport Health, Floyd County Health Department and Spiritstrong Fitness for the Highlands ARH Community Health Fair. Over 150 people with insurance disparities and travel barriers were provided with 293 free onsite health screenings. KCP registered 19 individuals for FIT Kits and 12 followed up with screening. Eleven individuals tested negative and one Floyd County resident who tested positive planned to follow up with a colonoscopy.



As the COVID-19 crisis occurred, KCP adapted to the needs of partners and communities. In the spring of 2020, KCP partnered with the Johnson County School System's Family Resource and Youth Services Center to provide 180 students with Sun Sense information and UV bead bracelet making kits. The kits were delivered, along with free meals, as part of the county's student meal program for children who were homeschooling due to COVID-19 closures. Erin Caudill, FRYSC Director at Porter Elementary said, "While students are spending more time at home, we hope they are spending more time outside. The Sun Sense beads and educational card provided by KCP are great sun safety teaching tools for parents and students."

BLUEGRASS EAST

Over 300 people received access to over 40 health screenings at the Harrison Memorial Hospital (HMH) Community Screening Day on April 6, 2019. Additionally, a collaboration with Markey Cancer Center's National Outreach Network provided colorectal cancer screening education to 75 participants. Post-event impacts include HMH utilization of the CRC education in their application for Commission on Cancer accreditation, and an invitation to present at the 8th Annual Appalachian Translational Research Network Summit highlighting the CRC education and results from surveys.



In 2018 and 2019, KCP initiated a collaboration with Kentucky HomePlace (Powell and Estill Counties) and 10 additional organizations to provide "Plan To Be Tobacco Free" tobacco treatment navigator training. All 45 participants reported gaining skills to conduct educational classes and one-on-one coaching sessions within their respective health care systems and organizations. KCP continues to support trained navigators through ongoing contact and shared resources.

BLUEGRASS WEST



KCP presented "Skin Cancer-Glow Is A No Go" to over 300 Kentucky Department of Transportation employees in Frankfort in October 2019. Through displays, written information, and the use of the DermaScan, 87 individuals were educated on early detection and prevention of skin cancer. More than 80% of the participants indicated an increase in cancer early detection and prevention knowledge following the event.

In April 2019, KCP partnered with West Jessamine Middle School, School Board Decision Making (SBDM) council, YMCA, and Jessamine County Public Library to hold the Healthy Kids Health Fair for children ages 12 to 14. The event and yearlong initiative were funded through a "Every Kid Healthy" grant, sponsored by Action for Healthy Kids. The entire student body of 1098 participated. More than 93% of the students said their knowledge of how to be healthy increased.

Highlights from Kentucky's Area Development Districts *(continued)*

BUFFALO TRACE



In the Fall of 2018, KCP partnered with the Bracken County Health Department and the UK Center for Smokefree Policy in the establishment of a Bracken County Smokefree Coalition to raise awareness about the risks of second-hand smoke. Air quality testing was conducted in Bracken County and results, which demonstrated the high levels of risk were shared in the local newspaper, and various community events.

In response to the need for creative outreach due to COVID-19, a partnership with Bracken County Extension provided Sun Sense bracelet kits and sun safety education to 50 4-H Youth in May 2020, which included a Facebook live event to conduct additional education on use of the kits. The 4-H participants were encouraged to post photos of their completed bracelets along with messages of what they learned from the project.

CUMBERLAND VALLEY

KCP set up the Incredible Colon in Jackson County in April 2019 as part of a community clinical linkage with Advent Health Manchester Hospital, ECU and Kentucky Cancer Link. Sixteen people were referred to KCL for FIT kits and 12 people were screened. Over 100 people attended to receive onsite health screenings, information on various health-related topics and to tour KCP's colorectal cancer exhibits.

Information about tobacco use and vaping was a top priority at the Mountain Fest Health Fair in Annville in October 2019. KCP partnered with Covenant Ministries and JCHIPS Health Coalition to educate 164 youth on the contents of cigarettes, smokeless tobacco and vaping products. Youth were especially interested in a display of the various types of products and risks associated with vaping. KCP also provided Pathfinder panel cards and colorectal screening and prevention literature for adults in attendance.



FALLS



KCP teamed up with the James Graham Brown Cancer Center and the Louisville Bats for a fun evening of baseball in celebration of National Cancer Survivors Day. Survivors received free t-shirts; were recognized in a parade around the concourse; and given the opportunity to throw out the first pitch. Pediatric survivors were invited to run the bases with Buddy Bat and to clean home plate. Over 1200 guests for "Knock Cancer Out of the Park" enjoyed the game, refreshments, face painting and a special fireworks display at the end of the night!

KCP is a co-sponsor of the annual Reel Recovery weekend. It offers physical and spiritual support to Kentucky men with cancer through fly fishing.

For 17 years, KCP has been offering a unique legal clinic in collaboration with the Louisville Pro Bono Consortium. Lawyers from Louisville share their expertise on wills, power of attorney, advance directives, family medical leave, disability, Medicaid and other insurance information with patients and caregivers. These clinics are held biannually at Gilda's Club Kentuckiana in a relaxed, inviting atmosphere.

Highlights from Kentucky's Area Development Districts *(continued)*

FIVCO

The January 2020 meeting of the Lawrence County Diabetes Support Group featured a Radon Awareness Month presentation by KCP. While partnering with the Lawrence County Health Department and Extension Office, KCP educated 22 people about radon and how to have their homes tested. The presentation featured a radon awareness display and referral to the Kentucky Radon Program for radon testing kits. To reinforce the education, an article on radon was printed in the local newspaper. All 22 participant surveys indicated an increase in knowledge about radon and its link to lung cancer.



GATEWAY



St. Claire Regional Hospital hosted the “Faces of Lung Cancer” display in November and December 2018 in partnership with KCP. The goal was to raise awareness for lung cancer and encourage smoking cessation. The display was rotated in high traffic areas within the hospital for hundreds to see. Cancer Committee members commented that “Faces of Cancer” provided talking points for a discussion between providers and patients about lung cancer screening.

GREEN RIVER



The IGA in Hancock County hosted annual pink days in recognition of October, National Breast Cancer Awareness Month. KCP partnered with the Hancock County Health Coalition, the Green River District Health Department, and others to provide information on the Kentucky Women's Cancer Screening Program, the Pathfinder, and other cancer prevention/detection recommendations. The Horses and Hope pink Mustang on display drew a crowd during the biennium to help celebrate survivors and raise community awareness.

The IGA in Hancock County hosted annual pink days in recognition of October, National Breast Cancer Awareness Month. KCP partnered with the Hancock County Health Coalition, the Green River District

Nearly 50 people attended a colon cancer lunch and learn program at Holy Name Jesus Catholic Church in Henderson. Dr. Amber Koon, a surgeon at Methodist Hospital, and Jaime Rafferty from KCP talked about colon cancer screening, the KCP Pathfinder, and shared information about the Kentucky Colon Cancer Screening Program offered through Ohio County Healthcare. Event sponsors were KCP, the Prevention and Wellness Program, Methodist Hospital, and Holy Name Jesus Catholic Church, which provided lunch.

KCP teamed up with UK Cooperative Extension Services' Supplemental Nutrition Assistance Program (SNAP) to provide a unique evening for cancer survivors. “SNAP into Survivorship” was custom designed to equip attendees with nutritional tips and cancer resource information from KCP's Pathfinder. The events held in Daviess, Henderson, and Webster Counties attracted 65 cancer survivors.

Highlights from Kentucky's Area Development Districts *(continued)*

KENTUCKY RIVER



Cancer Society, Juniper Health, Lee County Health Department and Kentucky Women's Cancer Screening Program to focus on

In October 2018, 29 women received mammography screening after participating in the Women's Health Fair in Lee County. KCP partnered with Kings Daughters Hospital, American

overcoming transportation barriers. Participants who had not been screened for colorectal or cervical cancer were referred to local clinics, as well.

A community clinical linkage was conducted at a "Healthy on the Hill" event in collaboration with Mountain Comprehensive Healthcare at their clinic in Whitesburg in September 2019. The Incredible Colon exhibit in combination with a display to teach skills on how to do a FIT screening at home resulted in the distribution of FIT or Cologuard kits to 23 people who had not been screened or who were not up to date with screening.

LAKE CUMBERLAND

A "New Normal on the Farm" workshop was held at Harmony Acres Farm in May 2019 for 11 female cancer survivors. The ladies enjoyed a luncheon, survivor focused education and healthy living skills training. Highlights featured participation in Tai Chi and horseback riding. Several community partners were involved in cohosting the event, including Pulaski County Extension, Somerset Kung Fu & Tai Chi, Horses & Hope and Markey Cancer Center NON-CHE. All 11 women indicated on a survey that they learned new coping techniques and planned to establish a women's cancer survivor support group.



In November 2018 and 2019, information on colon cancer prevention and screening was shared with high school sophomores and juniors at the Southern Kentucky AHEC HOT Expo at the Center for Rural Development in Somerset. KCP joined over 130 other exhibitors both years to provide materials and hands-on experiences to health occupation students from 26 schools in 15 counties. More than 600 students annually benefited from CRC education as they toured the Incredible Colon.



LINCOLN TRAIL



was Monte Martin, MD, an oncologist and hematologist at Flaget Cancer Care. Survivors were also given the opportunity to create souvenir ornaments to commemorate the occasion.

Over 300 cancer survivors of all ages turn out each year for Survivor Sunday held in Bardstown! Sponsored by KCP and Flaget Memorial Hospital Cancer Care, the event features live music, a picnic lunch, a signature art project, an inspirational message, along with recognition of survivors, caregivers, and staff. The guest speaker in 2019

KCP celebrated Pretty in Pink at St. Stephen Baptist Church in Radcliff. Central to the event was the pink truck from the Radcliff/Vine Grove Fire Department where one of the fire fighters lost his wife, Donna Joy, to breast cancer. She was an avid supporter of KCP and its mission. This special truck is displayed at breast cancer awareness events where people can add messages to the side in memory of those who have lost their lives to the disease or in honor of individuals who have survived.



Highlights from Kentucky's Area Development Districts *(continued)*

NORTHERN KENTUCKY

"Your New Normal: Life Beyond Cancer" workshop was held in Burlington at the Boone County Public Library in November 2018. KCP, Horses & Hope, and the Markey Cancer Control Program partnered for the half-day workshop for 13 cancer survivors. Education and skills training addressed the physical impact of cancer, importance of cancer care plans and personal healthy action plans to improve exercise, nutrition, and stress management. All the participants reported increased confidence in applying and using the knowledge and skills gained from the workshop.



In March 2019, KCP partnered with Turfway Park Racetrack in Florence to host the "11th Annual Horses & Hope Pink Day Race" for 120 cancer survivors and guests. Featured speakers included Chip Bach, Turfway Park General Manager, whose wife is a breast cancer survivor, Heather French Henry and representatives from several survivor support services. This yearly event continues to have an impact for survivors of Northern Kentucky and offers them support through empowerment and connection to their peers.

PENNYRILE



WKDZ/WHVO Radio in Cadiz hosted an annual Pink Out for the community. Held in the station parking lot, the event always takes place rain or shine in recognition of October, Breast Cancer Awareness Month. Christian and Trigg County judge executives along with Hopkinsville and Cadiz mayors present proclamations, and community dignitaries are interviewed on air. A pink ribbon suspended in the sky from a Cadiz Fire Department ladder truck tops off the festivities. KCP is pleased to be a partner and participant in this popular event!



KCP participated in a special event, Under the Big Top, at Baptist Health Madisonville where cancer patients were invited to take a break from treatment at a carnival of fun with games, prizes, and snacks.

PURCHASE

KCP partners each year with Paducah Dermatology, Mercy Health Lourdes and Baptist Health Paducah to host a free skin cancer screening for the community. In 2019, 118 people received free skin cancer screenings. Providers and volunteers from both hospitals spent their Saturday morning educating and screening individuals from the community.

KCP and Texas Roadhouse welcomed former Lt. Governor Dr. Stephen Henry to a cancer survivor luncheon in Paducah, on November 1, 2018. Dr. Henry spoke with the survivors and shared a message of hope and encouragement. Over 150 attendees received a special gift from KCP's Horses and Hope, and Texas Roadhouse's Ryan and Joelle Long were recognized for their commitment to cancer survivors and patients in the community.



Thank You District Cancer Councils!

KCP is honored to partner with organizations and individuals throughout the Commonwealth to deliver cancer control programs customized to support the needs of residents. Long standing relationships have been developed and sustained to offer vital support for strategic planning to address local cancer problems and to implement statewide initiatives in every region. KCP is proud to have such a large and diverse group of dedicated District Cancer Council members who share a common mission. Working in collaboration with these individuals across the state, KCP is able to leverage resources and to mobilize communities to action.

District Cancer Council meetings are held annually in all regions, and communications regularly take place with individual members and small groups for program planning. Although some spring meetings were delayed due to COVID-19, District Cancer Councils in Western Kentucky decided to close out the biennium with a first ever virtual joint meeting. Ninety-three participants joined to hear Dr. Tom Tucker with UK Markey Cancer Center provide an update on cancer and cancer health disparities in Kentucky and to view a demonstration on KCP's Pathfinder from Jamie Smith, KCP Cancer Control Specialist.

BARREN RIVER

Georgena Brackett, RHIA, LCSW, FACHE
David Dunn, MPH, DSC
Judy Harris, BS
Edna Hawkins
Steven House, MD, FAAFP
Lisa Houchin, MSPH
Lucy Juett, MS
Andria Keating, RD
Grace Lartey, MS
Anne Leonard, RN, BC, BSN, MBA
Vicky McFall, RN
Thomas Nicholson, PhD
Christy Ramey
Katie Sheperd
Beverly Siegrist, PhD, RN
Sally Tanaro, RN, MSN
Sarah Widener, RD

BIG SANDY

Melissa Bentley, RN
Julie Bush, BA
Stacy Crum
Danielle Franklin
Jessica Hall
Ancil Lewis, MSW
Thursa Sloan, RN, MSN
Fazilah Tom, RTT, MBA
Ashley Webb, RN
Rachel Willoughby, RN, CPS

BLUEGRASS EAST

Eric Baker
Courtney Barnes
Jacob Brandenburg
Jodie Brandenburg
Angela Brumley-Shelton, MA, MPH, CTTS
Jennifer Carpenter, RN, OCN
Erin Collins-Buchanan, MSW, CTR
Karen "Kay" Denniston
Lisa Edwards
Arielle Estes
Michael Flynn

BLUEGRASS EAST (CONT'D)

Alena Glass, RN, BSN, OCN
Tony Hall
Anne Hatton, RN
Lindsay Hayes
Gina Haynes-Sanders
Shonda Johnston
Candid McMaine
Benita Peoples
Angie Schalch
Mollie Smith
Cyndi Ellis Steele
Kelli G. Soard
April Thomas, MPH
Kacey Tucker
Jennifer Wyatt, MS, RD, LD

BLUEGRASS WEST

Sherry Bayliff, MD
Debbie Bell, MPH
Andrea Brown, MPH
Stacy Carter, NP
Rhonda Collier
Mary Findley, MD
Luci Hockersmith
Karli Jessie
Diane Miller, MA
Shana Peterson, MS
Dawn Rightmire, RN
Elaine Russel
Sharon Scruggs
Angela Brumley Shelton
Emily Steer
Hedi Sunny, RN
Lee Ann Taylor
Geri Tincer, RN
Emily Toadvine
Tonya Watkins

BUFFALO TRACE

Allison Adams, RN, MPA, CLC
Ann Allison
Sarah Arrasmith, BS
Kathy Bess, MEd
Mandi Broderick, BS

BUFFALO TRACE (CONT'D)

Heather Cheek, BS
Linda Edwards
Pamela Elliott-Ferrell, MSW, CSW
Joyce Fidler
Donna Fryman
Bridget Lykins, RD, LD, LDE
Tracy McGuire, BS
Kimberly Moore, MSN, RN
Teresa Plymnesser, LBSW
Donna Teegarden, RN, CDCES, MLDE
Pam Tribby, RHIA
Shannon Smith

CUMBERLAND VALLEY

Katherine Adams
Danielle N. Barrett
Christy Begley
Mark Bell
Jonathan D. Boggs
Paul Bowling
Morgan Bray
Melissa Brock
Tammy Brock
Lisa Brown
Randy Craft
Beverly Fee
Vickie Gaffney
Marsha Garrison, BS
Brandi Gilley, RD, MS
Lisa Gomez, RN, OCN
Brenda Graham
Christie Green, MPH, MPA
Dwain Harris
Angela Hubbard, RN
Tammy Jones, RN, MSN
Sarah Kersey
Kathy Lay, RN
Tess Lipps
Eric Lunde
Jayma Moore
Will Miller, PA
Jayma Moore
Tracy Morgan
Paula Niccum

CUMBERLAND VALLEY (CONT'D)

Kathy Oller
Joyce Parker
Kendra Peck
Tammy M. Pennington
Shanda Price
Lee Richardson, BS, BSW
Chris Self
Tammy Sutton
Kyle Swafford, BS
Rita Taylor, RN
Brooke Whitis

FALLS

Karen Allen
Vivian Lasley-Bibbs, MPH
Elizabeth Burrows
Tami Cappelletti, RRT
Judy Casey-Houlette, MA
Ruth Chowning, MS
Tonya Cook
JoAnna Couch, BSN, RN, OCN
Randa Deaton
Hilary Deskins, BSN, RN
Pastor Timothy Findley, Jr
Judy Fisher, RN, BSN, OCN
Brenda Fitzpatrick
Suzy Gessner
Ann Hagan, MBA
Councilwoman Cheri Bryant Hamilton
Craig Hammons
Bill Hayden, BSN, RN
Jaime Hendricks
Heather French Henry
Steve Henry, MD
Tommy Heulsman
Elizabeth Holtsclaw, MA
John Huggins, PhD
Holly Husband
Karla Jackson, BSN, RN
Earl Jones
Christina Kern
LaCreis Kidd, Ph.D., MPH
Goetz Kloecker, MD

DISTRICT CANCER COUNCILS (CONT'D)

FALLS (CONT'D)

Leanne Kommer, MSM, CHES
Sandi Knight
Karen Krigger, MD, MEd, FAAFP,
AAHIVM(S)
Crystal Labbato, DNP, APRN, AGCNS-
BC, AOCNS
Dana Lee, RN, BSN, OCN
Clarence Leslie
Allison Lewis
Krista MacArthur, RN, BSN, MBA-HCM
Lara MacGregor
Tammy McClanahan, MHA, BSN,
OCN, ACHE
Elizabeth McGuire, BS
Barb Millhollan
Laura Mitchell, MSN, RN,
ACNS-BC, AOCN
Mary Mitchell
Gina Morrison, RN, OCN
Pastor Warren Muir, Jr.
Celine Mutuyemaria, M.Ed.
Lindsay Nelson, MSW
Megan B Nelson, MD
Alona Pack, MSN
Bill Price
Kish Cumi Price, Ph.D.
Marie Porter
Lyndon Pryor
Bruce Richmond
Heath Rico-Storey
Ellen Schroeder
Ellie Schweizer
Shantelle Simpson, MSN, RN
Laura Szafranski, RT, (R)BS
Tina Toole-Harper, RN, CBCN
Jeff Vella
Leah Vanderwerp Walton, LCSW
Jeffrey White
Lori Woods
Councilwoman Mary Wooldridge

FIVCO

Terry Burchett, MS
Alivia Faris
Barb Fitzpatrick, CTR
Ryan Freeman
Janet Kegley
Angela McGuire
Christi McKinney RN, BSN, OCN
Gloria Rayburn
Amy Shepherd, CTR
Jaime Ward, MS
Ashley Wilks RN CLS

GATEWAY

Michael Anderson, DD
Gina Brien, MA
Sandra Ellington, MS, LD
Vickie Fairchild, RN, BSN, OCN
Ashley Gibson, MA
Kala Gilliam, CHW
Lois Ginn
Amanda Goolman, CHW
David Gross, MPA
Nicole Gwishiri, MS
Peggy Jones, MS
Megan Kiser
Shirley Prater, CHW
Regina Thompson, BA

GREEN RIVER

Tammy Belt
Tiffany Calvert
Suzanne Craig
Amanda Dame
Shiloh Fisher
Brooke Fogle
Gary Hall, M.ED
Tina Hayes
Rebecca Horn, BS
Pamela Hunter
Darla Jones
Shannon Long, BSN, RN, CHC
Richard Nading
Kathy Oliver
Vickie Poteat
Bonnie Roberts, MSM, RN, OCN
CeCe Robinson
Jennifer Schrader
Tina Snyder
Carla Terrell, BSN, OCN, BA
Daniel White
Megan Woosley, RN, BSN
Angela Woosley, RN, BSN, MEP
Debbie Zuemer-Johnson

KENTUCKY RIVER

Brittney Briggs, MBA
Tom Collins
Emerson Combs
Karen Combs
Linda Combs
Shannon Morton, RN
Sherry Payne, MA
Vivian Smith

LAKE CUMBERLAND

Tracy Aaron, CHES
Shannon G. Beaty, BS
Sandy Black
Cristi Blanton

LAKE CUMBERLAND (CONT'D)

Jeff Brickley
Deborah Carey, CSW, OSW-C
Debbie Carrico, RT(R)
Amy Coleman, MPH
Lynn Conner
Johnny Dishman
Jane Fry
Christy Nuetzman Guffey, MS
Jalaine T. Harlow
Dwain Harris, MHA
AmTullah Khan, MD
Edith M. Lovett
Audrey Meyer
Lydia Moore, RN
Mandy Prather
Jennifer Stephens Roberson, MBA
Theresa Russell
Holly Scalf, RT(R)(CT)
Vicki Sexton
Amy Singleton, BA, BS
Julie Waters
Christine Weyman, MD, PhD, FAAP
Sharon Whitehead, MA
Brooke Whitis
Susan Wilson
Laura Woodrum

LINCOLN TRAIL

Glenda Bastin, RN
Sara Jo Best, MPH
Karen Blaiklock, RN
Cabrina Buckman
Rebecca Farris-Allen, RN
Stefanie Goff, RN
Bill Oldham
Maggie Smith, RN

NORTHERN KENTUCKY

Michael Bachus, RN
Abigail Beausir, MPH, CHES
Elizabeth Bishop, CHES
Dianne Coleman, RN
Katrina Coyle, CPS
Camille Croweak, MPH, CPS
Starlette Englehardt, RN, CHPN
Hayley Franklin, BA
Shannon Gillie, CPS
Shayna Hamilton, MSN, RN
Jennifer Hunter, RN, MSN
Judy Jackson, M.Ed
Christina Johnson, BA
Tammy McDonald, RN, BSN
Lisa Meier
Becky Messmer, RN
Suzanne Piper, CSA

NORTHERN KENTUCKY (CONT'D)

Kathy Rack, BS
Phyllis Reed, RN, BSN
Cathy Reising, CTR
Rhonda Schlueter, RN, NSCN
Melody Stafford
Jeff Vella, MHA
Madonna Vinicombe, RN, MBA
Stephanie Vogel, M.Ed, CHES

PENNYRILE

Vickie Boyd
Lisa Bridges, RN
Crissy Carter, MS, RD, LD
Kelly Dawes, RN, BSN, AAS, CDCES,
MLDE
Kathy Dickinson, BS, ICPS
Alma Fink, RN
Chastity Gapp
LaTiya Kirby-Curlin
Peggy Mullins, LCSW
Michael Murray, MD
Martha Pleasant, MS
Candice Wentling
Eileen Wickham, RN

PURCHASE

Alicia Barnett, BSN, RN
Jennifer Brown, MS, RD, LD, LDE, CLC
Kaylene, Cornell, BA, RN, AE-C
Nikki R Coursey
Amy Ferguson, RD, LD, LDE
Halden Ford, MD
Jenny Griffin, BA, BS
Nicole Hudson, RD
Rachael King
Kent Koster
Joelle & Ryan Long
John Montville, MBA, FACHE, FACMPE,
CAAMA
Judy Moore, RN
Jennie Morehead
Melony Morgan
Michael Muscarella
Joy Nolcox, RN
Tonya Rittenberry, RT
Rachael Schmitz, MSN, APRN, FNP-BC
Bonnie Schrock, FACHE
Missy Stokes
Doris Summers
Angie Timmons
Mike Tutor
Ellen Walsh, CPS
Terri Walters, BSN, RN, OCN
Barbie Warner RN, BSN, OCN



The Kentucky Cancer Program and the leadership at the Brown Cancer Center, University of Louisville, and the Markey Cancer Center, University of Kentucky, would like to thank our many partners across the state for supporting our cancer control mission during the 2018-2020 biennium.



Thank You Partners!

We are grateful to the many organizations and individuals who have worked tirelessly, particularly during this unprecedented pandemic, to continue programs and services to residents of the Commonwealth.

PARTNERS

1st Baptist Church Anchorage	Bourbon County Hospital	City of Murray	Family Health Centers, Inc
Allen County Health Department	Bowling Green Parks & Rec	Clark County Health Department	Firestone Williamsburg - Tri County Cancer Coalition
Alpha Kappa Alpha Sorority	Bracken County Health Department	Clay County Cancer Coalition	Flaget Hospital Cancer Center
Alpha Phi Alpha Fraternity	BRASS	Clover Fork Clinic	Flaget Memorial Hospital
American Association of Physician Specialists	Breckinridge County Health Department	Coke Memorial UMC	Fleming County Hospital
American Cancer Society	Breckinridge County Interagency	Common Garments	Floyd County Health Department
American Lung Association	Breckinridge County Public Library	Communicare of Central KY	Fort Knox Ireland Army Health Clinic
Anthem Blue Cross and Blue Shield	Breckinridge County Schools, FRYSC	Community Action	Four Rivers Behavioral Health
Anytime Fitness	Breckinridge Health, Inc.	Community Clinic of Hardin-Larue Counties	Franklin County Health Department
Appalachian Regional Healthcare	Buckhead Mountain Grill	Community Medical Clinics	Friends of V
Area Health Education Centers	Buffalo Trace Health Department	Compton Orthodontics	Fruit of the Loom
Audubon Area Community Services	Bullitt County Health Department	CoreTech, LLC	Garrard County Health Department
Baptist Health	Burnett Avenue Baptist Church	Crittenden County Interagency	Gateway Wellness Coalition Bath County
Barren County Medical Society	Byers Insurance Agency	Crittenden County PACS	Georgetown Community Hospital
Barren River Area Development District	Caldwell Medical Center	Crittenden County Public Library	Georgetown Fairness Alliance
Barren River District Health Department	Calloway County Health Department	Cumberland Gastroenterology	Gilda's Club Kentuckiana
Bates Memorial Baptist Church	Cancer Fighters United	Cumberland Valley Area Development District	Girls Scouts of America
Bellarmino University	CareSource	Cumberland Valley District Health Department	Goodnight Memorial Library
Bendix-Spicer	Carhartt	Dennie Hardin & Associates	Grant County Schools
Berry Global	Central District Baptist Association of KY	Durrett Avenue Missionary Baptist Church	Graves Gilbert Clinic
Big Sandy Health Care	Certified Action	E.C. Green Cancer Center	Grayson County Health Department
Blount Rural Health Clinic	Christian Appalachian Project	EEZY	Grayson County Interagency
Bluegrass Care Navigator	Christian County Health Department	Elizabethtown Community and Technical College	Grayson County Public Library
Bluegrass Health First	Churchill Downs	Enterprise Rental Car	Grayson County Schools, FRYSC
Bluegrass Outpatient Center	City of Bowling Green	Estill and Powell County ASAP	Greater Louisville Medical Society
Body Works Chiropractic	City of Hopkinsville	Estill County Health Dept	Green River Area Development District
Bon Secours	City of Madisonville	Fairview Community Health Center	
Boone County Health Alliance		Falls City Medical Society	



Thank You Partners!

PARTNERS (CONT'D)

Green River District Health Department
Greenview Regional Hospital
Hardin County Interagency
Hardin County Public Library
Hardin Memorial Cancer Center
Hardin Memorial Family Care Centers
Hardin Memorial Hospital
Harmony Therapy Yoga
Harrison Memorial Hospital
HealthWorks Medical
Heritage Hospice
Highlands Regional Medical Center
Holley Performance Products
Hope Health Clinic
Hope Scarves
Hope Unlimited
Hopkins County Health Department
Hopkins County Madisonville Public Library
Hospice of Central Kentucky
Hospice of Hope
Housing Authority of Hopkinsville
Humana, Inc.
IBAW
iHeartMedia
Impact Ministry
James Graham Brown Cancer Center
Jennie Stuart Health
Jessamine County Health Department
Johnson County Health Department
Keeneland
Kentuckiana Health Collaborative

Kentucky Academy of Family Physicians
Kentucky Academy of Physician Assistants
Kentucky African Americans Against Cancer
Kentucky Cancer Consortium
Kentucky Cancer Consortium – Lung Cancer Network
Kentucky CancerLink
Kentucky Chapter of American College of Physicians
Kentucky Coalition of Nurse Practitioners and Nurse Midwives
Kentucky Colon Cancer Screening Program
Kentucky Commissioner of Health
Kentucky Department of Public Health
Kentucky Dermatological Society
Kentucky Homeplace
Kentucky Hospital Association
Kentucky Medical Association
Kentucky New Era
Kentucky Osteopathic Medical Association
Kentucky Primary Care Association
Kentucky Prostate Cancer Coalition
Kentucky River Foothills Development Council, Inc.
Kentucky Rural Health Association
Kentucky Society of Respiratory Care
Kentucky State Parks
Kentucky Tobacco Prevention and Cessation Program
Kentucky Women's Cancer Screening Program

KentuckyOne Health
Kid's First Dental
Kingdom Fellowship Christian Life Center
Kings Daughters Medical Center
Knox County Health Department
KYANNA Black Nurses
Lake Cumberland Cancer Treatment Center
Lake Cumberland District Health Department
Lake Cumberland Regional Hospital
Larue County Interagency
Larue County Public Library
Laurel County Center For Innovation
Laurel County Health Department
Lawrence County Health Department
Lewis County Health Department
Lexington-Fayette County Health Department
Licking Valley Robertson County Senior Center
Lincoln County Health Department
Lincoln Trail District Health Department
Livestrong at the YMCA
Livingston Hospital and Healthcare Services
Logan Aluminum
Logan Memorial Hospital
Louisville and Jefferson County Partnership in Cancer Control
Louisville Bar Association
Louisville Defender Newspaper
Louisville Metro Public Health and Wellness

Louisville Metro Public Housing Authority
Louisville Pro Bono Consortium
Louisville Urban League
Lyon County Champions
Marcum and Wallace Hospital
Marion County Heartland Coalition
Marion County Public Library
Marion County Schools, FRYSC
Marsha's Place
Marshall County ASAP
Marshall County Health Department
Meade County Interagency
Meade County Public Library
Meadowview Regional Medical Center
Med Center Health Bowling Green
Med Center Health Surgical Weight Loss - Dr. Nwanguma
Med Center Hematology & Oncology
Medicaid
Medical Center Health & Wellness
Mercer County Health Department
Mercy Health Paducah
Mercy Health Paducah Medical Oncology and Hematology
Merle M. Mahr Cancer Center
Metro Council
Monroe County Health Department
Monroe County Homemakers
Monroe County Medical Center
Montgomery County Health Department
Mountain Comprehensive Care
Mountain Comprehensive Health Corporation

PARTNERS (CONT'D)

Muhlenberg County Health Department	Pikeville Medical Center	St. Elizabeth Hospital	UofL Health Care
Murray-Calloway County Hospital	Population Health Coalition of Grayson County	St. Stephen Baptist Church of Radcliff	UofL Institute for Sustainable Health and Optimal Aging
Murray State University School of Nursing	Porter Family	Sullivan University	UofL School of Medicine
National Minority Quality Forum - Sustainable Healthy Communities	Porter Scholars	Susan G. Komen for the Cure	UofL School of Nursing
Nelson County Community Clinic	Portland Health Clinic	T.J. Health Pavillion	UofL School of Public Health and Information Sciences
Nelson County Interagency	Powell County Office	T. J. Samson Community Hospital	Vermont Thread Gage
Nelson County Public Library	Primary Plus FQHC	T.J. Samson Family Medical Center	Warren County Cooperative Extension
Nelson County Schools, FRYSC	Purchase AHEC	Tates Creek Middle School	Warren Rural Electric
Nicholas County FRYSC	Purchase Area Development District	Taylor Regional Hospital	Washington County Extension Services
North Key	Purchase District Health Department	Texas Roadhouse Paducah	Washington County Public Library
Northern Kentucky Health Department	Red Bird Mission	The Links	Washington County Schools, FRYSC
Northern Kentucky University	Redeemer Lutheran Church	The Medical Center	Washington County Wellness Coalition
Northwest AHEC	River District Health Department	The Medical Center at Franklin	Wayne County Hospital
Norton Healthcare	River Valley Behavioral Health	Three Rivers Health Department	WEDCO District Health Department
Ohio County Health Care	River Valley Senior Network	Three Rivers Medical Center	WellCare Health Plan
Oldham County Health Department	Rockcastle Regional Hospital	Todd County Health Department	Whitehouse Clinic
Oncology Nursing Society, Greater Louisville Chapter	Rogers Group	Triad Health Systems	Whitley County Health Department
Ovarian Awareness of Kentucky	Save The Children	Trigg County Hospital	Williamstown Senior Citizens
Owensboro Health	Scott County Middle School	Tug Valley ARH Regional Medical Center	WKDZ/WHVO Radio
Paducah Dermatology	Scotty's Contracting	Turfway Park	WKU, Department of Public Health, School of Nursing
Park DuValle Community Health Center	Shawnee Christian Healthcare Center	Twin Lakes Regional Medical Center	WKU, Kelly Autism Center
Passport Health	Simpson County Extension Office	Twisted Pink	WKU, Veterans Upward Bound
PATH Coalition of Nelson County	Smoketown Family Wellness Center	UK College of Medicine	WLOU Praise Power 104.7
Paul B Hall Regional Medical Center	Somerset Community College	UK Cooperative Extension	Woodford County Health Department
Pennyrile Area Development District	South Central AHEC	UK Rural Cancer Prevention Center	WPKY Radio
Pennyrile District Health Department	Southcentral Kentucky Community and Technical College	United Way of the Ohio Valley	Yearlings Club
Perry County Schools	Southern Recycling	University of Pikeville College of Osteopathic Medicine	YMCA
Phi Beta Sigma Fraternity	Springview Hospital, Marion County	UofL Continuing Medical Education and Professional Development	
	St. Claire Regional Medical Center	UofL Delphi Center	
	St. Claire Research	UofL Dental School	
	St. Elizabeth Healthcare		

For more information, visit www.kycancerprogram.org

KENTUCKY CANCER PROGRAM STAFF

Directors

Connie L. Sorrell, MPH,
University of Louisville

Debra Armstrong, MSW, MPA,
University of Kentucky

Regional Coordinators

Barren River District

Elizabeth Westbrook, MCHES
Cancer Control Specialist, Sr.

Big Sandy District

Jennifer Wilson, MS
Cancer Control Specialist

Bluegrass District

Tonya Pauley, MA
Cancer Control Specialist

Amy Steinkhul, MA
Cancer Control Specialist

Buffalo Trace District

Angela Combs, MSW
Cancer Control Specialist

Cumberland Valley

Jeff Lunsford, BS
Cancer Control Specialist

Falls District

Pam Temple-Jennings, BA
Cancer Control Specialist

FIVCO District

Jennifer Wilson, MS
Cancer Control Specialist

Gateway District

Angela Combs, MSW
Cancer Control Specialist

Green River District

Jaime Rafferty, BA
Cancer Control Specialist

Kentucky River District

Ashley Teague, MBA
Cancer Control Specialist

Lake Cumberland District

Wynona Padgett, BA
Cancer Control Specialist

Lincoln Trail District

Suzanne Gude, MA
Cancer Control Specialist

Northern Kentucky District

Mary Schneider, MA
Cancer Control Specialist

Pennyrile District

Joan Lang, MBA
Cancer Control Specialist

Purchase District

Jamie Smith, BS
Cancer Control Specialist

Support Staff

Garyl Barlow
Administrative Assistant

Cindy Dame
Administrative Assistant

Linda Davidson
Financial Coordinator

Vanessa Goble
Administrative Assistant

Carolyn Gyurik
Administrative Assistant

Sandy Hardin
Administrative Assistant

Jane Morgan
Administrative Assistant

Charlotte Paez
Administrative Assistant

Michele Weaver, BS
Administrative Assistant

Kentucky African Americans Against Cancer

Janikaa Sherrod, MPH
Cancer Control Specialist

Virginia Bradford, RN
Harriett B. Porter Cancer
Outreach Coordinator

Joyce Mills
Patient Navigator

Kentucky LEADS LUCA National Training Network

Swopnil Shapit-Gaines, MPH
Program Manager

Karen Coombs, MS
Communications Manager

Celeste Worth, CHES
Program Manager

Horses and Hope

Pam Cooper, RN
Screening Coordinator

Carol Hurst, RN
Special Projects Director

Miriam Bello
Hispanic Patient Navigator

Diana Varone
Hispanic Patient Navigator

Professional Education

Kris Paul, MSN, APRN
Cancer Control Specialist, Sr.

Jamie Smith, BS
Cancer Control Specialist

Markey Cancer Control Network

Mindy Rogers, MA
*National Outreach Network
Community Health Educator*



University of Kentucky Markey Cancer Center

2365 Harrodsburg Rd., Suite A230
Lexington, KY 40504-3381
859-323-2002

University of Louisville Brown Cancer Center

Med Center One
501 E. Broadway, Suite 160
Louisville, KY 40202-3277
502-852-6318



www.kycancerprogram.org